



Suspend[®]

POLYZONE[®]

- Residual control that lasts for up to 90 days
- Reduces the number of applications necessary to maintain control
- Exclusive PolyZone technology creates a microscopic polymer film that protects AI from weather, precipitation, irrigation and mechanical abrasion
- Exclusive PolyZone technology binds AI to surface, and slowly releases over time to achieve extended control
- Extended residual under commercial conditions

ACTIVE INGREDIENT:

*Deltamethrin 4.75%

OTHER INGREDIENTS:..... 95.25%

TOTAL: 100.00%

*Contains 0.42 lb deltamethrin per gallon.

EPA Reg No. 432-1514

**STOP - READ THE LABEL
BEFORE USE.
KEEP OUT OF REACH OF
CHILDREN.
CAUTION**

See Back Panel for First Aid Instructions and Booklet for Complete Precautionary Statements and Directions for Use.

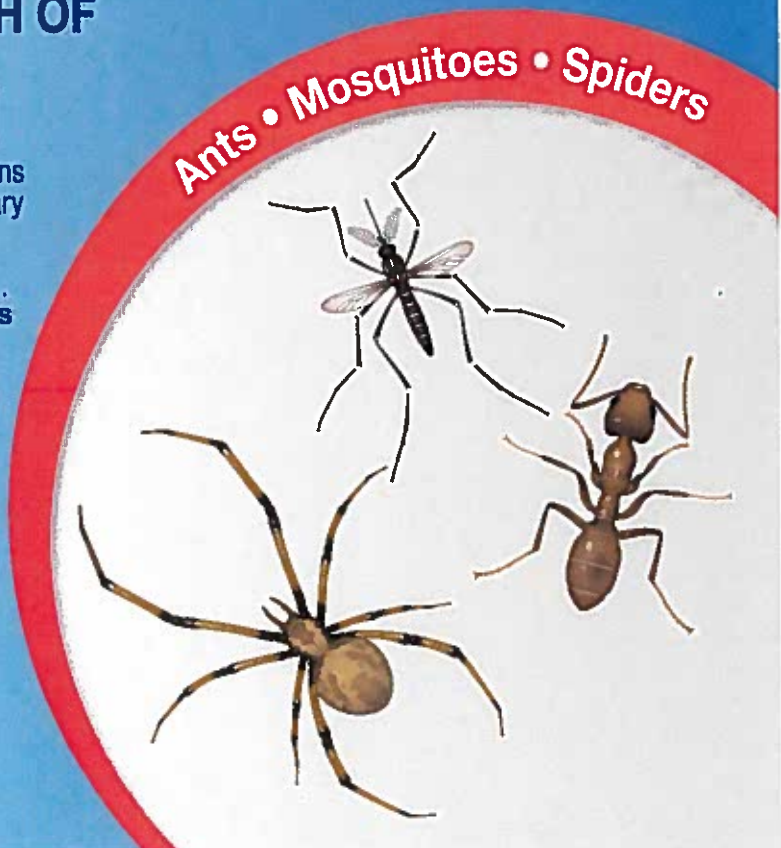
For **MEDICAL** and **TRANSPORTATION** Emergencies **ONLY** Call 24 Hours A Day
1-800-334-7577

For **PRODUCT USE** Information
Call 1-800-331-2867

Net Contents
1 Gallon

84984329

84974447A 160920AV3



FIRST AID	
If in eyes:	<ul style="list-style-type: none"> • Hold eyes open and rinse slowly and gently with water for 15-20 minutes. • Remove contact lenses, if present, after the first 5 minutes, then continue rinsing. • Call a poison control center or doctor for treatment advice.
If on skin or clothing:	<ul style="list-style-type: none"> • Take off contaminated clothing. • Rinse skin immediately with plenty of water for 15-20 minutes. • Call a poison control center or doctor for treatment advice.
<p>Have the product container or label with you when calling a poison control center or doctor or going for treatment. In case of emergency call toll free the Bayer CropScience Emergency Response Telephone No. 1-800-334-7577.</p>	
<p>Note To Physician: No specific antidote is available. Treat the patient symptomatically.</p>	

PRECAUTIONARY STATEMENTS

HAZARDS TO HUMANS AND DOMESTIC ANIMALS

CAUTION

Causes moderate eye irritation. Avoid contact with skin or clothing. Wash thoroughly with soap and water after handling and before eating, drinking, chewing gum, using tobacco, or using the toilet. Contact with product may result in transient tingling and reddening of the skin. Remove contaminated clothing and wash before reuse.

ENVIRONMENTAL HAZARDS

This product is extremely toxic to fresh water and estuarine fish and invertebrates. Use with care when applying in areas adjacent to any body of water. To protect the environment, do not allow pesticide to enter or run off into storm drains, drainage ditches, gutters, or surface waters. Applying this product in calm weather when rain is not predicted for the next 24 hours will help to ensure that wind or rain does not blow or wash pesticide off the treatment area. Rinsing application equipment over the treated area will help avoid run off to water bodies or drainage systems.

This pesticide is highly toxic to bees exposed to direct treatment. Do not apply or allow it to drift to crops or weeds on which bees are foraging the treated area.

PHYSICAL AND CHEMICAL HAZARDS

Do not use water-based sprays of Suspend® PolyZone in conduits, motor housings, junction boxes, switch boxes, or other electrical equipment because of possible shock hazard.

Product Facts:	
<ul style="list-style-type: none"> • Residual Control that lasts for up to 90 days. • Longer residual means fewer applications required, reducing the number of applications required to maintain control. • Compared to SC formulations, this product improves rain fastness. • Exclusive formulation technology creates a microscopic polymer film that protects AI from weather, precipitation, irrigation, and mechanical abrasion. 	
Suspend PolyZone	<p>This product is a suspension concentrate formulation containing 0.42 lb of Deltamethrin per gal.</p> <p>This product is designed for use both indoors and outdoors and will provide effective knockdown and long residual control of the pests listed on this label.</p> <p>For residential, industrial and institutional control of major nuisance and public health pests listed on the label.</p> <p>Will not damage paints, plastics, fabrics or other surfaces where water alone causes no damage.</p>
Controls	<ul style="list-style-type: none"> • Indoor, Listed General Household Pests, Pantry and Stored Product Pests, and Food/Feed Processing/Handling Pests • Outdoor/ Perimeter Pests • Wood-Infesting Pests <p><i>For list of specific insects, see inside</i></p>
Where to Apply	<ul style="list-style-type: none"> • Apply where pests have been seen or found, or can find shelter. • In and around buildings and structures • On ornamentals in landscapes and interior plantscapes

Product Facts (cont.):	
Where to Apply	<ul style="list-style-type: none"> • On residential, commercial, and recreational areas of turf
Dilution Rates	<p>1. When 1.5 fl oz (45.4 ml) is diluted in one gal of water, the active ingredient concentration is equivalent to 0.06% Deltamethrin. Use of the 1.5 fl oz (0.06%) rate is recommended for severe pest infestations or when longer residual control is desired.</p> <p>2. When 0.75 fl oz (22.7 ml) is diluted in one gal of water, the active ingredient concentration is equivalent to 0.03% Deltamethrin. Use of the 0.75 fl oz (0.03%) rate is recommended for initial service or clean out treatments.</p> <p>3. When 0.25 fl oz (7.5 ml) is diluted in one gal of water, the active ingredient concentration is equivalent to 0.01% Deltamethrin. Use of the 0.25 fl oz (0.01%) rate is recommended for maintenance treatments.</p>
Mixing Information	<p>This product is intended to be mixed with water and applied with hand pressurized or power operated sprayers. Shake this product well before measuring concentrate for dilution in water. Mix the appropriate amount of this product with water. Thoroughly shake, agitate, or invert sprayer to insure proper suspension. If spraying is interrupted when using a back-pack or hand-held sprayer, invert sprayer to re-suspend the dilution before starting to make applications. Diluted spray mixture can be stored overnight, but agitate well before using. If spray screens are used, they should be 50 mesh or larger.</p>
Tank mixing	<p>This product may be tank-mixed with other registered pesticides unless expressly prohibited by the product label. A small volume mixing test with other products is recommended to ensure compatibility. Take all restrictions and precautions which appear on the labels of these products.</p>
How to Apply	<p>General surface applications, spot treatments, crack and crevice sprays, or void injections by sprays, mists, or foams. Broadcast application to turf and foliar application to ornamentals.</p>
Re-Apply	<p>Treatments may be applied at 21-day intervals, or as necessary to maintain adequate control.</p>
Re-Entry	<p>Do not have contact with treated surfaces until dry. Do not allow people or pets to re-enter until after the treated area is dry.</p>
Questions	<p>For questions or comments, call toll free 1 800 331-2867</p>

DIRECTIONS FOR USE

It is a violation of Federal Law to use this product in a manner inconsistent with its labeling.

INDOOR PESTS

Indoor applications to buildings and structures may be made as a general surface, spot treatment, crack and crevice applications, or void (spray, mist, foam) injections. For residential buildings and structures apply only as a crack and crevice or spot treatment. This includes schools, factories, stores, warehouses, hospitals, food processing facilities (food/feed and non food/feed areas), and modes of transportation. For a list of common facilities where this product may be used, see Appendix.

Ants	Cluster flies	Firebrats	Hornets	Multi-colored Asian
Bed bugs	Cockroaches	Fleas	House flies	lady beetles
Blue/green bottle flies	Crickets	Flesh flies	Leather beetles	Phorid flies
Boxelder bugs	Darkling beetles	Flies	Midges	Pillbugs
Carpet beetles	Dermestids	Fruit flies	Millipedes	Sciarid flies (fungus
Centipedes	Earwigs	Gnats	Mosquitoes	gnats)
Clothes moths	Elm leaf beetles	Hide beetles	Moths	Scorpions

INDOOR PESTS (cont.)				
Silverfish	<u>Pantry and</u>	Cigarette beetles	Hairy fungus beetles	Saw-toothed grain beetles
Sowbugs	<u>Stored Product</u>	Drugstore beetles	Indian meal moths	Warehouse beetles
Spiders	<u>Pests; beetles &</u>	Flour beetles	Lesser grain borers	
Ticks	<u>moths</u>	Foreign grain beetles	Mediterranean flour moths	
Wasps	Angoumois grain	Grain weevils	Merchant grain beetles	
Yellowjackets	moths			
Where to Apply	<p>Treat where pests have been seen or found, or can find shelter.</p> <p>Treat areas where pests normally feed or hide, such as baseboards, corners, around water pipes, behind and under refrigerators, cabinets, sinks and stoves.</p> <p>This product can be applied to walls, floors, ceilings, in and around cabinets, between, behind and beneath equipment and appliances, around floor drains, window and door frames and around plumbing, sinks and other possible pest harborage sites.</p> <p>Treat entry points around water pipes, utility penetrations, windows, doors, vents, and eaves.</p> <p>Void applications can be made behind veneers, piers, and chimney bases, into rubble foundations, into block voids and structural voids, wall voids, under slabs, stoops, porches or to the soil in crawlspaces, and other similar voids.</p> <p>Spot treat floors, floor coverings, carpets, or rugs for flea and tick control; DO NOT treat entire floor area.</p>			
Use Rate	<p>0.01% - - 0.25 fl oz (7.5 ml) per gal</p> <p>0.03% - - 0.75 fl oz (22.7 ml) per gal</p> <p>0.06% - - 1.50 fl oz (45.4 ml) per gal</p>			
How to Apply (see Application for Indoor Pests)	<p><u>Spot Applications</u></p> <ul style="list-style-type: none"> • Use a low pressure system (do not exceed 50 psi at nozzle tip) with a fan-type nozzle to uniformly apply spot treatments in and around cupboards, and beneath, between and behind equipment or appliances. • In the home, all food processing surfaces and utensils should be covered before treatment or thoroughly washed following treatment. Cover exposed food or remove from area being treated. <p><u>Spray, Mist or Foam Crack and Crevice or Void Applications</u></p> <ul style="list-style-type: none"> • Spray, mist, or foam directly into cracks and crevice or voids where pests or their nests are present. Apply the volume of spray, mist, or foam sufficient to cover the area. • Spray: Use a low pressure system (do not exceed 50 psi at nozzle tip) with a pin-point or variable pattern nozzle to apply the spray mixture to areas such as floors, cracks and crevices in and around baseboards, walls, expansion joints, areas around water and sewer pipes or utility penetrations, and voids created by equipment and appliances. • Mist: Use appropriate mist generating equipment. Do not allow mist to drift out of void spaces into commonly occupied areas of structure. • Foam: Use foam to treat structural voids and control pests in walls, under slabs or other void areas. Using appropriate foam generating equipment, mix dilution with manufacturers specified volume of foaming agent and apply sufficient volume of foam. 			
When to Apply	<p>When pests are seen or found.</p> <p>Treatments may be applied at 21-day intervals, or as necessary to maintain adequate control.</p>			
Restrictions	<p>Do not apply broadcast treatments to floors or floor coverings.</p> <p>Do not apply as a space spray.</p> <p>Remove or tightly cover fish tanks and disconnect aerators during application.</p> <p>Keep people and pets away from sites of application until treated area has dried.</p> <p>When treating areas directly over your head, wear eye protection (safety glasses, goggles or face shield) and dust/mist mask or respirator.</p> <p>In the home, do not allow spray to contact food/feed surfaces. If it does, clean surfaces with soap and water.</p> <p>Do not allow people or pets to contact treated areas until spray has dried.</p>			

(continued)

INDOOR PESTS (cont.)	
Restrictions	<p>Do not apply in hospital and/or nursing home rooms while they are occupied.</p> <p>Do not apply in classrooms while they are occupied.</p> <p>Do not apply in aircraft cabins.</p> <p>Do not apply to furniture or upholstery where prolonged contact with humans will occur.</p> <p>Do not apply as a space spray.</p> <p>Do not allow excessive dripping or run-off to occur when treating vertical or overhead surfaces.</p> <p>Do not apply in conduits, motor housings, junction boxes, switch boxes, or other electrical equipment because of possible shock hazard.</p>

APPLICATION FOR INDOOR PESTS	
<p>Ants, Centipedes, Clothes Moths, Cockroaches, Crickets, Earwigs, Firebrats, Millipedes, Pillbugs, Scorpions, Silverfish, Sowbugs, and Spiders</p>	<p>Apply as a coarse, low pressure (do not exceed 50 psi at nozzle tip) spot or crack and crevice spray to areas that these pests normally inhabit. Pay particular attention to dark corners of rooms and closets; floor drains; cracks and crevices in walls; along and behind baseboards; beneath and behind sinks, stoves, refrigerators, and cabinets; around plumbing and other utility installations; doors, window frames and in attics and crawl spaces. Spot applications may be made to floor surfaces along baseboards and around air ducts. Let surfaces dry before allowing people or pets to contact surfaces.</p>
<p>Pantry Pest Control</p>	<p>To kill adult and accessible immature stages of insects such as lesser grain borers, grain weevils, flour beetles, saw-toothed grain beetles, cigarette beetles, merchant grain beetles, Angoumois grain moths, Mediterranean flour moths, and Indian meal moths: Make applications to cupboards, shelving and storage areas. Remove all foodstuffs, all utensils, shelf paper, and other objects before spraying. Allow all treated surfaces to dry before replacing foodstuffs, utensils or other items. Any foodstuff accidentally contaminated with any spray solution must be discarded.</p>
<p>Ants, Cockroaches, Crawling and Flying Insect Pests Flies, Gnats, Midges, Mosquitoes (including mosquitoes that may transmit Zika, Dengue, Chikungunya, and West Nile virus), and Silverfish</p>	<p>Apply directly to walls, ceilings, window screens and other resting areas as a residual surface treatment. May be used inside residential buildings, as well as in and around carports, garages, storage sheds, unoccupied barns, stables, or pet kennels.</p>
<p>Ants Including Pharaoh's ant</p>	<p>Apply to trails, around doors and window frames and other areas where ants inhabit or enter premises.</p>
<p>Bed Bugs</p>	<p>Spray bed bugs and eggs directly wherever possible following site directions below. For infested mattresses, remove linens and wash before reuse. Apply to mattresses, especially tufts, folds, and edges until moist. Allow to dry before remaking bed.</p> <p>Apply to bedsprings, box springs, and the interior of bed frames or headboards, including all cracks and crevices.</p> <p>When bed bugs are found in upholstered furniture, apply only to the infested tufts, seams, folds and edges, but do not make broadcast applications to flat surfaces where prolonged human contact will occur. If bugs heavily infest furniture (inside cushions and/or batting) apply a labeled insecticide dust or consider fumigation.</p>

APPLICATION FOR INDOOR PESTS (cont.)

Bed Bugs	Apply as a crack and crevice treatment to all baseboards, moldings, beneath floor coverings and carpets, closets, shelves, curtains, furniture and picture frames that may provide harborage to bed bugs.
Carpet Beetles, Fleas and Ticks	<p>A total integrated pest management program is recommended. It is suggested that infested areas be thoroughly vacuumed prior to treatment. These areas include all carpet, upholstered furniture, baseboards, and other indoor areas frequented by pets. The vacuum cleaner bag should be discarded in an outdoor trash container upon completion. Pet bedding should be cleaned or replaced.</p> <p>Apply this product as a uniform, coarse low-pressure (do not exceed 50 psi at nozzle tip) spot or crack and crevice treatment to areas where these pests normally inhabit. Limit spot treatments to pet bedding and its surrounding area, infested floor coverings and pest habitats. DO NOT treat entire area of floor, carpet or floor coverings. When these pests are found in upholstered furniture, apply only to the infested tufts, seams, folds and edges, but do not make broadcast applications to flat surfaces where prolonged human contact will occur.</p> <p>This product can also be applied out-of-doors for flea and tick control (see directions in Outdoor/Perimeter Pests).</p>
Pet Kennels	For residual control of crawling and flying insects in and around these structures, apply as a general surface and/or crack and crevice spray. Optimal control results if facilities to be treated are clean and if the exterior perimeter is concurrently treated with this product. Apply only to areas of facility where animals are not present. Allow spray to dry before allowing re-entry of animals into treated areas. Do not apply to animal feed or watering equipment. Do NOT treat pets with this product.
Food/Feed Handling Establishments	<p>For control of all labeled pests, applications are permitted in food/feed and non-food/non-feed areas of food/feed handling and processing establishments as a general surface, spot or crack and crevice treatment.</p> <p>Food/Feed handling establishments are defined as places other than private residences in which exposed food/feed is held, processed, prepared or served. Included also are areas for receiving, storing, packing (canning, bottling, wrapping, boxing), preparing, edible waste storage and enclosed processing systems (mills, dairies, edible oils, syrups) of food/feed. Serving areas where food/feed is exposed and the facility is in operation are also considered food/feed areas.</p> <p>Non-Food/Non-Feed Areas: Examples of non-food/non-feed areas include garbage rooms, lavatories, floor drains (to sewers), entries and vestibules, offices, locker rooms, machine rooms, boiler rooms, mop closets and storage (after packaging, canning or bottling). All areas that insects inhabit or through which insects may enter should be treated.</p> <p>General Surface Applications: Do not use this application method in the food/feed handling areas of the facility when the facility is in operation or foods/feeds are exposed. Do not apply directly to food/feed products. Cover or remove all food/feed processing and/or handling equipment during application. After application in food/feed processing plants, cafeterias and similar facilities, wash all equipment, benches, shelving, and other food contact surfaces. Clean exposed food/feed handling or processing equipment and thoroughly rinse with clean, fresh water. After application in bakeries, clean all food contact surfaces thoroughly with appropriate equipment.</p> <p>Spot or Crack & Crevice Applications: Except in federally inspected meat and poultry plants, spot or crack and crevice applications may be made while the facility is in operation provided exposed food is covered or removed from area being treated prior to application. Do not apply directly to food or food-handling surfaces.</p>
Grain Bins and Warehouses	Dilute 0.25-1.5 fl oz of product with water to make 1 gal of solution. Apply finished spray to equipment, wall and floor surfaces of grain bins and warehouses at the rate of 1 gal per 1000 sq ft prior to storing or handling grain. Application should be made only after equipment bins and buildings have been thoroughly cleaned. Empty bins or warehouses should be fumigated with an EPA registered fumigant according to the manufacturer's label directions and precautions when inaccessible areas exist. To help prevent infestation of these structures, apply product as a perimeter treat-

(continued)

APPLICATION FOR INDOOR PESTS (cont.)

Grain Bins and Warehouses

ment where pests are active and may find entrance. It is recommended to treat a band of soil or lawn up to 6-10 feet wide around and adjacent to structures and treat the foundation to a height of 2 to 3 feet. Mix 0.25 - 1.5 fl oz of product with water to make 1 gal of solution. Apply as a coarse spray at a rate of 1 gal per 1000 sq ft. Thoroughly and uniformly wet the barrier area but do not allow run-off to occur.

OUTDOOR/PERIMETER PESTS

Use this product to control outdoor pests by application as a perimeter treatment, residual spray or broadcast application to exterior surfaces of buildings, lawns, grounds, and ornamental plantings.

Ants	Crickets	Gnats	Multi-colored Asian	Stable flies
Blue or green bottle flies	Earwigs	Ground beetles	lady beetle	Ticks
Boxelder bugs	Elm leaf beetles	Hornets	Pill bugs	Wasps
Brown marmorated stink bug	Fire ants	House flies	Scorpions	Yellow jackets
Carpenter ants	Firebrats	Midges	Silverfish	
Centipedes	Fleas	Millipedes	Sow bugs	
Cockroaches	Flesh flies	Mosquitoes	Spiders	
Cluster flies	Flies	Moths	Springtails	

Where to Apply

This product may be applied as a residual spray or as a perimeter treatment around residential and non-residential settings.
Residual Spray: Apply to surfaces on building exteriors, porches, patios and other structures, around door and window frames, eaves and attic vents, utility entry points, soffit areas and other exterior openings (including foundation cracks or drilled holes) where pests enter the structure or where they have been seen or found, or can find shelter.
Perimeter Treatments: Treat the outside of the structure, including walls (to a height of 2 to 3 feet), around door and window frames, and soffits where pests are active or may enter or hide. Treat the soil, turf, or other ground covering adjacent to the structure (in a band up to 10 feet wide) where pests are seen, have been found, or can find shelter. In ant management programs, apply to flower, shrub or ornamental plant beds where ants may be nesting, find food or forage.

Application Restrictions

Do not water the treated area to the point of run-off
 Do not make applications during rain.
 Do not apply directly to impervious horizontal surfaces such as sidewalks, driveways, and patios except as a spot or crack and crevice treatment. During application, do not allow pesticide to enter or run off into storm drains, drainage ditches, gutters, or surface waters.
 All outdoor applications, if permitted elsewhere on this label, must be limited to spot or crack and crevice treatments only, except for the following permitted uses:
 1. Applications to soil or vegetation, as listed on this label, around structures;
 2. Applications to lawns, turf, and other vegetation, as listed on this label;
 3. Applications to the side of a building, up to a maximum height of 3 feet above grade;
 4. Applications to underside of eaves, soffits, doors, or windows permanently protected from rainfall by a covering, overhang, awning, or other structure;
 5. Applications around potential pest entry points into buildings, when limited to a surface band not to exceed one inch in width;
 6. Applications made through the use of a coarse, low pressure spray to only those portions of surfaces that are directly above bare soil, lawn, turf, mulch or other vegetation, as listed on this label, and not over an impervious surface, drainage or other condition that could result in runoff into storm drains, drainage ditches, gutters, or surface waters, in order to control occasional invaders or aggregating pests.
 Application is prohibited directly into sewers or drains, or to any area like a gutter where drainage to sewers, storm drains, water bodies, or aquatic habitat can occur. Do not allow the product to enter any drain during or after application.
 Do not apply Suspend PolyZone through any type of irrigation system.
 Do not apply this product to edible crops.

(continued)

OUTDOOR/PERIMETER PESTS (cont.)																																								
Use Rate	0.25 fl oz (7.5 ml) per 1,000 sq ft of surface 0.75 fl oz (22.7 ml) per 1,000 sq ft of surface 1.50 fl oz (45.4 ml) per 1,000 sq ft of surface																																							
How to Apply (see Application for Outdoor/Perimeter Pests)	Apply as a coarse low pressure (do not exceed 50 psi at nozzle tip) spray at the rate of 0.25 to 1.5 fl oz of this product per 1,000 sq ft of surfaces. Apply in a sufficient volume of water to provide adequate coverage but do not allow run-off to occur. High volume applications using power sprayers: You must adjust the rate of product dilution to ensure the correct amount of the product (see Use Rate section above) is applied per 1,000 sq ft of treated surface. For example, mixing 12.5 fl oz of this product in a 50 gal tank, while using an application volume of 3.0 gals per 1,000 sq ft, will apply 0.75 fl oz of this product per 1,000 sq ft. The table below gives examples of end use dilutions for typical power spraying application volumes.																																							
	<table border="1"> <thead> <tr> <th colspan="3">DILUTION RATE CHART</th> </tr> <tr> <th><u>Amount of Product fluid ounces (milliliter)</u></th> <th><u>Application Volume gallons water</u></th> <th><u>Concentration (% AI) in spray solution</u></th> </tr> </thead> <tbody> <tr> <td rowspan="5">0.25 (7.5)</td> <td>1</td> <td>0.01%</td> </tr> <tr> <td>2</td> <td>0.005%</td> </tr> <tr> <td>3</td> <td>0.0033%</td> </tr> <tr> <td>4</td> <td>0.0025%</td> </tr> <tr> <td>5</td> <td>0.002%</td> </tr> <tr> <td rowspan="5">0.75 (22.7)</td> <td>1</td> <td>0.03%</td> </tr> <tr> <td>2</td> <td>0.015%</td> </tr> <tr> <td>3</td> <td>0.01%</td> </tr> <tr> <td>4</td> <td>0.0075%</td> </tr> <tr> <td>5</td> <td>0.006%</td> </tr> <tr> <td rowspan="5">1.5 (45.4)</td> <td>1</td> <td>0.06%</td> </tr> <tr> <td>2</td> <td>0.03%</td> </tr> <tr> <td>3</td> <td>0.02%</td> </tr> <tr> <td>4</td> <td>0.015%</td> </tr> <tr> <td>5</td> <td>0.012%</td> </tr> </tbody> </table>	DILUTION RATE CHART			<u>Amount of Product fluid ounces (milliliter)</u>	<u>Application Volume gallons water</u>	<u>Concentration (% AI) in spray solution</u>	0.25 (7.5)	1	0.01%	2	0.005%	3	0.0033%	4	0.0025%	5	0.002%	0.75 (22.7)	1	0.03%	2	0.015%	3	0.01%	4	0.0075%	5	0.006%	1.5 (45.4)	1	0.06%	2	0.03%	3	0.02%	4	0.015%	5	0.012%
DILUTION RATE CHART																																								
<u>Amount of Product fluid ounces (milliliter)</u>	<u>Application Volume gallons water</u>	<u>Concentration (% AI) in spray solution</u>																																						
0.25 (7.5)	1	0.01%																																						
	2	0.005%																																						
	3	0.0033%																																						
	4	0.0025%																																						
	5	0.002%																																						
0.75 (22.7)	1	0.03%																																						
	2	0.015%																																						
	3	0.01%																																						
	4	0.0075%																																						
	5	0.006%																																						
1.5 (45.4)	1	0.06%																																						
	2	0.03%																																						
	3	0.02%																																						
	4	0.015%																																						
	5	0.012%																																						
When to Apply	Begin applications when pests are noticed. Treatments may be applied at 21-day intervals or as necessary to maintain adequate control.																																							

APPLICATION FOR OUTDOOR/PERIMETER PESTS

Ants, roaches and other listed crawling pests	Apply as a residual spray and/or perimeter treatment around the infested structure as described above. Locate and treat ant nests if possible. Follow trails of foraging worker ants and inspect for likely nest sites. If ants are nesting in soil, drench or inject the nest and surrounding soil. Foliar applications to landscape ornamentals will control aphids, scale insects, and other plant-sucking insects and limit the production of honeydew (an important food source for ant populations). Apply a light mist of the dilute spray, and do not allow excess run-off. Treat thoroughly for good coverage, including the underside of leaves. It is recommended to remove or prune away any shrubbery, bushes, or tree branches touching the structure. Vegetation touching the structure may offer a route of entry for ants into the structure, allowing ants to avoid contact with the treatment.
Occasional invaders including multi-colored Asian lady beetle, boxelder bug, brown marmorated stink bug, and elm leaf beetle.	Apply directly to insects that have congregated around doors, window frames, and similar areas where they may enter the structure. Apply a perimeter treatment as described above. For best results, treat trees and shrubs infested with boxelder bugs, elm leaf beetles, and other occasional invading species early in the season. Tree spraying may require ornamental license - check with your local regulator.

(continued)

APPLICATION FOR OUTDOOR/PERIMETER PESTS (cont.)	
Fleas and Ticks (including ticks that may transmit Rocky Mountain Spotted Fever)	Apply as a coarse wet spray to areas where fleas and ticks are most likely to be found, such as dog houses, kennels, runways, along paths or trails, under plants, shrubs, bushes, trees, or other shaded, moist areas where pests may be found. Treat the entire area where these pests could be present. Fleas and ticks may be re-introduced from surrounding areas by host animals.
Mosquitoes (including mosquitoes that may transmit Zika, Dengue, Chikungunya, and West Nile virus)	Treat with spray or mist around landscape plants, turf and ground cover, under decks, around building foundations and other places where mosquitoes may rest.
Fire Ants	Apply as a mound drench. Dilute 1.5 oz per one gal of water. Gently sprinkle 1 to 2 gals of the diluted insecticide over the surface of each mound and surrounding area to a 2-foot diameter. For best results, apply in cool weather, 65 to 80°F or in early morning or late evening hours. Treat new mounds as they appear.
Scorpions	Treat areas where scorpions may hide. Treat known or suspected harborage on and around exterior walls. Apply spot treatments into cracks, crevices, weep holes or other access points into hollow block walls or masonry veneer. Spray around and beneath stones and along rocky areas. Scorpions will often harbor beneath the bark on trees, so inspect these areas and treat as required. When possible, remove piles of debris and building materials near the exterior wall that can harbor the pests. Apply a perimeter treatment to the exterior walls and adjacent soil. You may treat around piles of firewood, but do not treat firewood with this product.
Hornets, wasps, and yellow jackets	Make a pin stream application directly to hornet or yellow jacket nests. To reduce sting threat, make applications in the evening when the insects are inside the nest. For paper wasps, use a pin stream or fan spray and apply over surface of exposed nest. Remove and destroy treated nests to prevent emergence of newly emerged insects. If removal is not possible, retreat nests as needed.
Centipedes, millipedes, pill bugs, sow bugs, springtails.	Apply perimeter treatment to reduce the number of insects entering the structure. Thoroughly treat mulched areas. Correcting moisture problems around the structure will reduce pest pressure.
House flies and Cluster flies	Apply low pressure (do not exceed 50 psi at nozzle tip) mist or spray to outside of surfaces of buildings, porches, patios, garages, fences, and other areas where house flies rest. Cluster flies: Treat in late summer or fall, just before cluster flies begin looking for winter shelter. Spray siding, eaves, around window frames and doors, and window screens. To help reduce infestations, treat cracks and crevices, attics and other indoor winter hiding places.

WOOD-INFESTING PESTS			
Drywood termites	- Anobiid or deathwatch	- wharf borers	Carpenter ants
Beetles	- False powderpost	- Ambrosia beetles	Carpenter bees
- Lyctid or powder post	- old house borers	- bark beetles	
Where to Apply	For treatment of wood infested with, or subject to infestation by, wood-infesting pests. Apply where pests have been seen or found, or can find shelter. Not for structural protection.		
Use Rate	0.06% - - 1.50 fluid ounce (45.4 milliliter) per gallon		

(continued)

WOOD-INFESTING PESTS (cont.)	
How to Apply	Apply spray, mist, or foam as described below in the application section. Treatment dilutions may also be applied to wood surfaces by paint brush or roller. Do not contact treated surfaces until dry.
When to Apply	When pests are seen or found. Treatments may be applied at 21-day intervals, or as necessary to maintain adequate control.
Foam Applications	This product can be converted to foam and used to treat structural voids to control wood-infesting pests in walls, under slabs, within masonry voids, or in other void areas. Mix end-use dilution with manufacturer's specified volume of foaming agent.

APPLICATION FOR WOOD-INFESTING PESTS	
Drywood termites & wood-infesting beetles (Not for Structural Protection)	<p>Galleries and structural voids: Treat by applying sprays, mists, or foams. Locate galleries by using visual signs (frass or pellets, blistered wood, emergence or clean out holes), the presence of live insects, mechanical sounding techniques, or listening devices (e.g., stethoscopes, acoustic emission detectors). Penetrate the gallery system by drilling holes to receive the injector tip or treatment tool. Distribute drill holes to adequately cover the gallery system. Apply as low pressure (do not exceed 50 psi at nozzle tip) spray, or by misting or, where appropriate, by foaming. Do not treat to the point where runoff is detected from adjacent holes.</p> <ul style="list-style-type: none"> • Avoid drilling where electrical wiring, plumbing lines, etc. are located. • Do not apply where electrical shock hazards exist. • Drill holes in commonly occupied areas must be sealed after treatment. <p>Wood surfaces: Treat by spray or mist or, where appropriate, foam applications. For inaccessible surfaces, drill and treat the interior of structural voids. Surfaces treated may include exposed wooden surfaces in crawlspaces, basements, or attics. Wooden exterior surfaces such as decks, fencing, or siding, structural voids, channels in damaged wood, in spaces between wooden members of a structure, and junctions between wood and foundations. Apply by brushing or as a coarse, low pressure (do not exceed 50 psi at nozzle tip) spray to the wood surface; apply sufficient volume to cover the surface to the point of wetness, but avoid applying to the point of runoff.</p> <p>When spraying wood surfaces overhead in living areas, cover surfaces below the treated area with plastic sheeting or similar material. Do not contact treated surfaces until spray deposits have dried.</p>
Carpenter ants	<p>Homes and other structures: Apply around doors and window frames and other places where carpenter ants may enter. Spray or foam into cracks and crevices, or spray, mist or foam through small drilled holes into voids where ants or their nests are present. Use enough spray or foam to cover the area, but do not exceed 1 gal of dilute suspension per 1,000 sq ft of treated surface.</p> <p>It is recommended to remove or prune away any shrubbery, bushes, or tree branches touching the structure. Vegetation touching the structure may offer a route of entry for ants into the structure, allowing ants to avoid contact with the treatment.</p> <p>Exterior ant nests: Inside trees, utility poles, fencing and decking materials and similar structural members, drill to find the interior infested cavity and inject spray, mist, or foam using a treatment tool with a backsplash guard.</p> <p>Tunneling in soil: Apply as a soil drench or inject the dilution or foam in the soil at intervals of 8 to 12 inches. Use 1 gal of dilution per 8 sq ft. Treat along the edges of walls, driveways or other hard surfaces where ants are tunneling beneath the surface.</p> <p>Protecting firewood from carpenter ants: Treat soil beneath firewood before stacking at 1 gal of dilution per 8 sq ft. Do not treat firewood with this product.</p>
Carpenter bees	Apply as a spray or mist, or sufficient volume of foam, directly into gallery entrance holes. Leave entrance open to be sure that returning adult bees are killed. When there is no longer any insect activity, the entrance hole may be sealed with a suitable sealant. Exterior wood surfaces may be treated by general surface application to prevent nest cavity excavation by adult carpenter bees.

STORAGE AND DISPOSAL

Do not contaminate water, food, or feed by storage or disposal.

PESTICIDE STORAGE

Mix as needed. Store in original container in a secured dry storage area. Avoid extremes in temperatures. Prevent cross contamination with other pesticides and fertilizers. If the container is leaking and/or material is spilled on floor or paved surfaces, absorb on sawdust or other commercially available absorbing material, sweep up and remove to chemical waste area for your disposal. Concentrate is stable at normal storage temperatures.

PESTICIDE DISPOSAL

Wastes resulting from the use of this product may be disposed of on site or at an approved waste disposal facility.

CONTAINER HANDLING

Less than one gal

Nonrefillable container. Do not reuse or refill this container. Triple rinse container (or equivalent) promptly after emptying. Triple rinse as follows: Empty the remaining contents into application equipment or a mix tank and drain for 10 seconds after the flow begins to drip. Fill the container ¼ full with water and recap. Shake for 10 seconds. Pour rinsate into application equipment or a mix tank or store rinsate for later use or disposal. Drain for 10 seconds after the flow begins to drip. Repeat this procedure two more times. Securely wrap container in several layers of newspaper and discard in trash or offer for recycling if available. If partly filled: Call your local solid waste agency for disposal instructions. Never place unused product down any indoor or outdoor drain.

One to 5 gal size

Nonrefillable container. Do not reuse or refill this container. Triple rinse container (or equivalent) promptly after emptying. Triple rinse as follows: Empty the remaining contents into application equipment or a mix tank and drain for 10 seconds after the flow begins to drip. Fill the container ¼ full with water and recap. Shake for 10 seconds. Pour rinsate into application equipment or a mix tank or store rinsate for later use or disposal. Drain for 10 seconds after the flow begins to drip. Repeat this procedure two more times. Offer for recycling or reconditioning, or puncture and dispose of in a sanitary landfill. If partly filled: Call your local solid waste agency for disposal instructions. Never place unused product down any indoor or outdoor drain.

Rigid Non-refillable containers that are too large to shake (i.e., with capacities greater than 5 gals or 50 lbs)

Non-refillable container. Do not reuse or refill this container. Triple rinse or pressure rinse container (or equivalent) promptly after emptying. Triple rinse as follows: Empty the remaining contents into application equipment or a mix tank. Fill the container ¼ full with water. Replace and tighten closures. Tip container on its side and roll it back and forth, ensuring at least one complete revolution, for 30 seconds. Stand the container on its end and tip it back and forth several times. Empty the rinsate into application equipment or a mix tank or store rinsate for later use or disposal. Repeat this procedure two more times. Pressure rinse as follows: Empty the remaining contents into application equipment or a mix tank and continue to drain for 10 seconds after the flow begins to drip. Hold container upside down over application equipment or mix tank or collect rinsate for later use or disposal. Insert pressure rinsing nozzle in the side of the container, and rinse at about 40 PSI for at least 30 seconds. Drain for 10 seconds after the flow begins to drip. Then offer for recycling or reconditioning or puncture and dispose of in a sanitary landfill.

Refillable container.

Refill this container with pesticide only. Do not reuse this container for any other purpose. Cleaning the container before final disposal is the responsibility of the person disposing of the container. Cleaning before refilling is the responsibility of the refiller. To clean the container before final disposal, empty the remaining contents from this container into application equipment or mix tank. Fill the container about 10 percent full with water. Agitate vigorously or recirculate water with the pump for 2 minutes. Pour or pump rinsate into application equipment or rinsate collection system. Repeat this rinsing procedure two more times. Then offer for recycling or reconditioning or puncture and dispose of in a sanitary landfill.

APPENDIX

Use this product as a general surface, spot, mist, or crack and crevice treatment. Permitted areas of use include the following buildings, structures, and modes of transport:

- | | | |
|---|---|---|
| • aircraft (cargo holds only) | • grain mills | • nursing homes |
| • apartment buildings | • granaries | • offices |
| • bakeries | • greenhouses (structures only) | • pickle factories |
| • bottling facilities | • hospitals | • poultry houses |
| • breweries | • hotels | • processing and packing plants |
| • buses | • houses | • restaurants |
| • cafeterias | • industrial buildings | • schools |
| • candy plants | • kitchens | • spice plants |
| • cereal processing and manufacturing plants | • laboratories | • stores |
| • correctional facilities | • livestock housing | • warehouses |
| • dairies and dairy product processing plants | • pet kennels | • wineries and similar structures |
| • food manufacturing plants | • manufacturing establishments | • transportation vessels such as buses, trucks, trailers, rail cars, and marine vessels |
| • food processing plants | • mausoleums | |
| • food service establishments | • meat, poultry & egg processing & packaging plants | |
| • frozen food plants | • meat and produce canneries | |
| | • mobile & motor homes | |

IMPORTANT: READ BEFORE USE

Read the entire Directions for Use, Conditions, Disclaimer of Warranties and Limitations of liability before using this product.

If terms are not acceptable, return the unopened product container at once. By using this product, user or buyer accepts the following Conditions, Disclaimer of Warranties and Limitations of Liability.

CONDITIONS: The directions for use of this product are believed to be adequate and must be followed carefully. However, because of manner of use and other factors beyond Bayer CropScience LP's control it is impossible for Bayer CropScience LP to eliminate all risks associated with the use of this product. As a result, crop injury or ineffectiveness is always possible. All such risks shall be assumed by the user or buyer.

DISCLAIMER OF WARRANTIES: TO THE EXTENT CONSISTENT WITH APPLICABLE LAW, BAYER CROP-SCIENCE LP MAKES NO OTHER WARRANTIES, EXPRESS OR IMPLIED, OF MERCHANTABILITY OR OF FITNESS FOR A PARTICULAR PURPOSE OR OTHERWISE, THAT EXTEND BEYOND THE STATEMENTS MADE ON THIS LABEL. No agent of Bayer CropScience is authorized to make any warranties beyond those contained herein or to modify the warranties contained herein. TO THE EXTENT CONSISTENT WITH APPLICABLE LAW, BAYER CROPSCIENCE LP DISCLAIMS ANY liability whatsoever for special, incidental or consequential damages, resulting from the use or handling of this product.

LIMITATIONS OF LIABILITY: TO THE EXTENT CONSISTENT WITH APPLICABLE LAW, THE EXCLUSIVE REMEDY OF THE USER OR BUYER FOR ANY AND ALL LOSSES, INJURIES OR DAMAGES RESULTING FROM THE USE OR HANDLING OF THIS PRODUCT, WHETHER IN CONTRACT, WARRANTY, TORT, NEGLIGENCE, STRICT LIABILITY OR OTHERWISE, SHALL NOT EXCEED THE PURCHASE PRICE PAID, OR AT BAYER CROP-SCIENCE LP'S ELECTION, THE REPLACEMENT OF PRODUCT.

Bayer (reg'd), the Bayer Cross (reg'd), Suspend® and PolyZone® are registered trademarks of Bayer.

Produced for:
Bayer Environmental Science
A Division of Bayer CropScience LP
2 T. W. Alexander Drive
Research Triangle Park, NC 27709

Bayer



Suspend[®] POLYZONE[®]

- Residual control that lasts for up to 90 days
- Reduces the number of applications necessary to maintain control
- Exclusive PolyZone technology creates a microscopic polymer film that protects AI from weather, precipitation, irrigation and mechanical abrasion
- Exclusive PolyZone technology binds AI to surface, and slowly releases over time to achieve extended control
- Extended residual under commercial conditions

ACTIVE INGREDIENT:

*Deltamethrin 4.75%

OTHER INGREDIENTS:..... 95.25%

TOTAL: 100.00%

*Contains 0.42 lb deltamethrin per gallon.

EPA Reg No. 432-1514

**STOP - READ THE LABEL BEFORE USE.
KEEP OUT OF REACH OF CHILDREN.
CAUTION**

See Back Panel for First Aid Instructions and Booklet for Complete Precautionary Statements and Directions for Use.

For MEDICAL and TRANSPORTATION Emergencies ONLY Call 24 Hours A Day
1-800-334-7577
For PRODUCT USE Information Call 1-800-331-2867

Net Contents

1 Gallon

84984329

84974447A 160920AV3

FIRST AID

If in eyes:	<ul style="list-style-type: none">• Hold eyes open and rinse slowly and gently with water for 15-20 minutes.• Remove contact lenses, if present, after the first 5 minutes, then continue rinsing.• Call a poison control center or doctor for treatment advice.
If on skin or clothing:	<ul style="list-style-type: none">• Take off contaminated clothing.• Rinse skin immediately with plenty of water for 15-20 minutes.• Call a poison control center or doctor for treatment advice.
Have the product container or label with you when calling a poison control center or doctor or going for treatment. In case of emergency call toll free the Bayer CropScience Emergency Response Telephone No. 1-800-334-7577.	
Note To Physician: No specific antidote is available. Treat the patient symptomatically.	

PRECAUTIONARY STATEMENTS

HAZARDS TO HUMANS AND DOMESTIC ANIMALS

CAUTION

Causes moderate eye irritation. Avoid contact with skin or clothing. Wash thoroughly with soap and water after handling and before eating, drinking, chewing gum, using tobacco, or using the toilet. Contact with product may result in transient tingling and reddening of the skin. Remove contaminated clothing and wash before reuse.

ENVIRONMENTAL HAZARDS

This product is extremely toxic to fresh water and estuarine fish and invertebrates. Use with care when applying in areas adjacent to any body of water. To protect the environment, do not allow pesticide to enter or run off into storm drains, drainage ditches, gutters, or surface waters. Applying this product in calm weather when rain is not predicted for the next 24 hours will help to ensure that wind or rain does not blow or wash pesticide off the treatment area. Rinsing application equipment over the treated area will help avoid run off to water bodies or drainage systems.

This pesticide is highly toxic to bees exposed to direct treatment. Do not apply or allow it to drift to crops or weeds on which bees are foraging the treated area.

PHYSICAL AND CHEMICAL HAZARDS

Do not use water-based sprays of Suspend PolyZone in conduits, motor housings, junction boxes, switch boxes, or other electrical equipment because of possible shock hazard.

STORAGE AND DISPOSAL

Do not contaminate water, food, or feed by storage or disposal.

PESTICIDE STORAGE	Mix as needed. Store in original container in a secured dry storage area. Avoid extremes in temperatures. Prevent cross contamination with other pesticides and fertilizers. If the container is leaking and/or material is spilled on floor or paved surfaces, absorb on sawdust or other commercially available absorbing material, sweep up and remove to chemical waste area for your disposal. Concentrate is stable at normal storage temperatures.
PESTICIDE DISPOSAL	Wastes resulting from the use of this product may be disposed of on site or at an approved waste disposal facility.
CONTAINER HANDLING	Nonrefillable container. Do not reuse or refill this container. Triple rinse container (or equivalent) promptly after emptying. Triple rinse as follows: Empty the remaining contents into application equipment or a mix tank and drain for 10 seconds after the flow begins to drip. Fill the container ¼ full with water and recap. Shake for 10 seconds. Pour rinsate into application equipment or a mix tank or store rinsate for later use or disposal. Drain for 10 seconds after the flow begins to drip. Repeat this procedure two more times. Offer for recycling or reconditioning, or puncture and dispose of in a sanitary landfill. If partly filled: Call your local solid waste agency for disposal instructions. Never place unused product down any indoor or outdoor drain.



(01)00785740540640

84922439A 160920AV3

Bayer

Produced for:
Bayer Environmental Science
A Division of Bayer CropScience LP
2 T. W. Alexander Drive
Research Triangle Park, NC 27709
Product of India